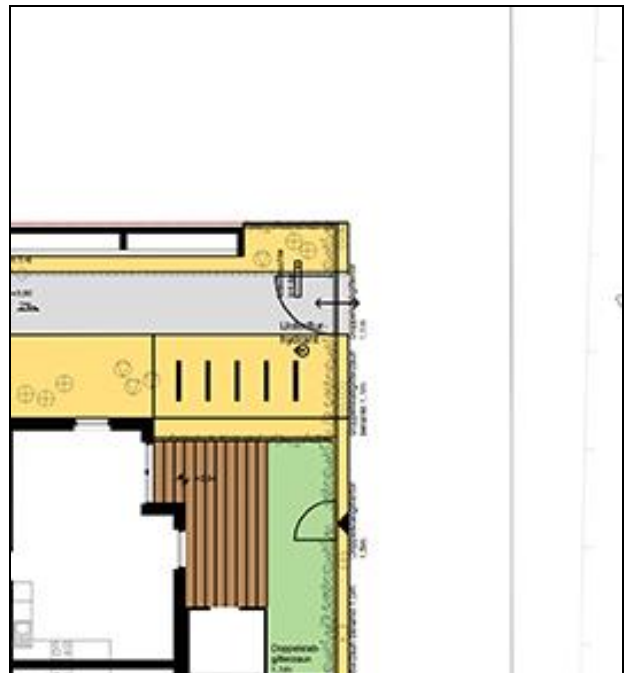


Open spaces at the Kaisermühlenstrasse development

In Vienna's Stadlau district the non-profit housing association BWSG has built a passive-energy housing development with 270 dwelling units designed by Treberspurg & Partners. PlanSinn carried out the open-space planning and managed the moving-in phase.

The major axis to the east of the long block functions as a mobility and communication backbone with footpaths and cycle paths. Bike racks and seating areas are interspersed between outdoor activity facilities (jungle gym, climbing wall, play equipment), a communal gardening bed and wooden decks. □□To the north, this axis leads to a square-like space with a generous EPDM-covered area. A transparent sound insulation wall partially covered with climbing plants buffers this area from the noisy underground and railway track. □□The smaller axes and squares between the rows of houses are designed as quieter zones divided up into private gardens with patios, grassed gravel activity areas, asphalted access paths and green grass and shrubbery buffer zones in front of the ground-floor apartments. The public thoroughfare and the access road to the south are lined by a row of flowering ash trees.



2009 - 2014

Client

BWSG - Gemeinnützige allgemeine Bau-,
Wohn- und Siedlungsgenossenschaft

Partners

Treberspurg & Partner Architekten ZT GmbH

Project management

Mellauner Michl (Project coordination)
Mally Lena

Categories

Landscape Architecture & Planning
Open Spaces & Landscape Planning